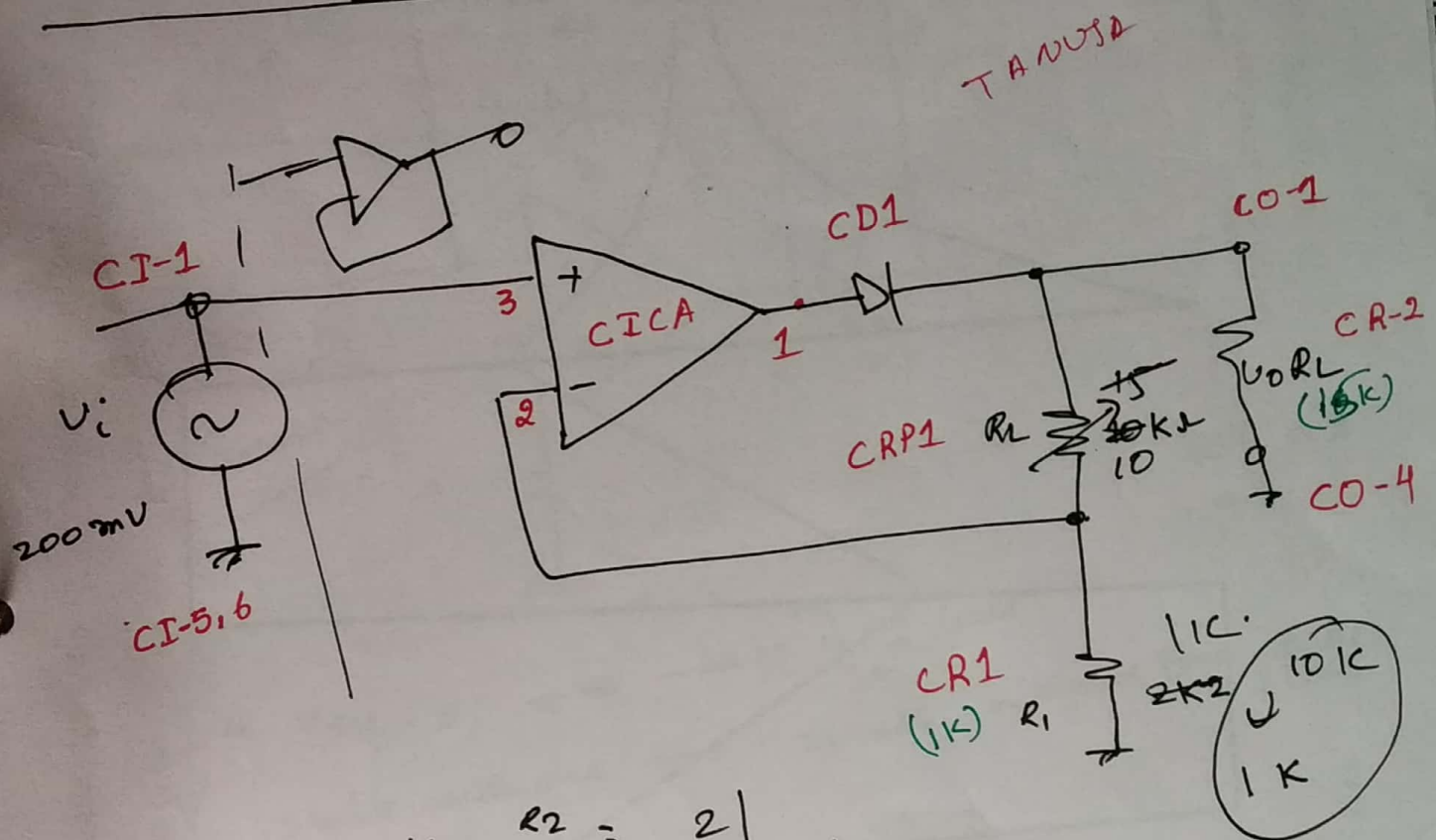


TYPE: 3 PRECISION RECTIFIER:

Saturation type precision half wave rectifier!

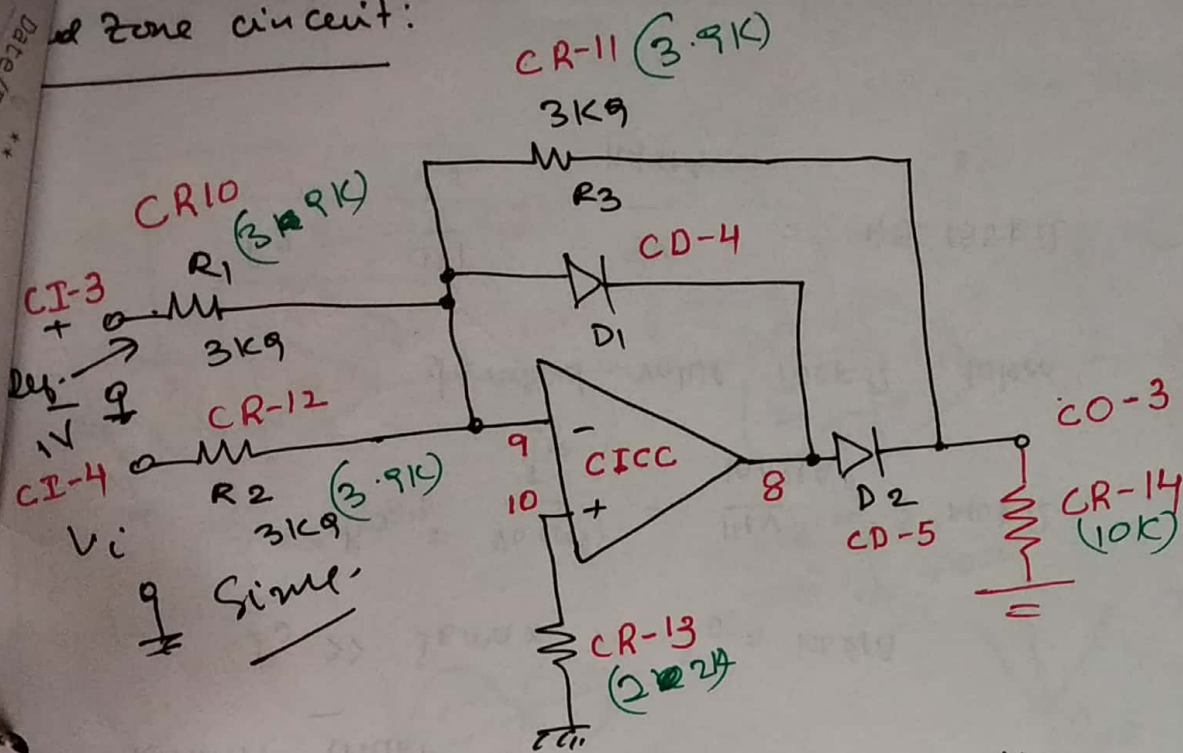


$$\text{gain} = 1 + \frac{R_2}{R_1} = 2 \quad | \quad R_2 = R_1$$

if $R_2 = 10K$ then, gain = 6.
 $\therefore O/P = 200 \times 10^{-3} \times 6 = 1.2V$

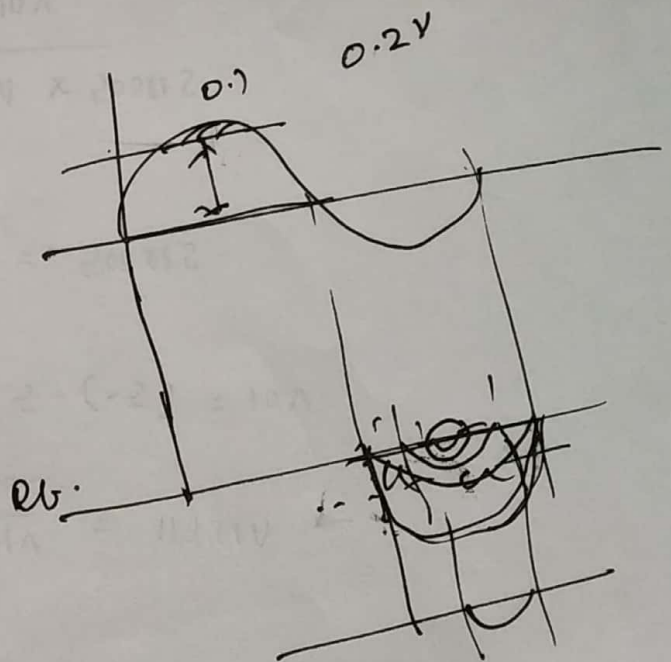
best may be 151c.

Zone circuit:



10V 9.8
9.3

with $V_{ref} = 0 \rightarrow$ -ve $\frac{1}{2}$ cycle full.
stable response \rightarrow creates a dead zone for the input.



Wave rectifier.

